

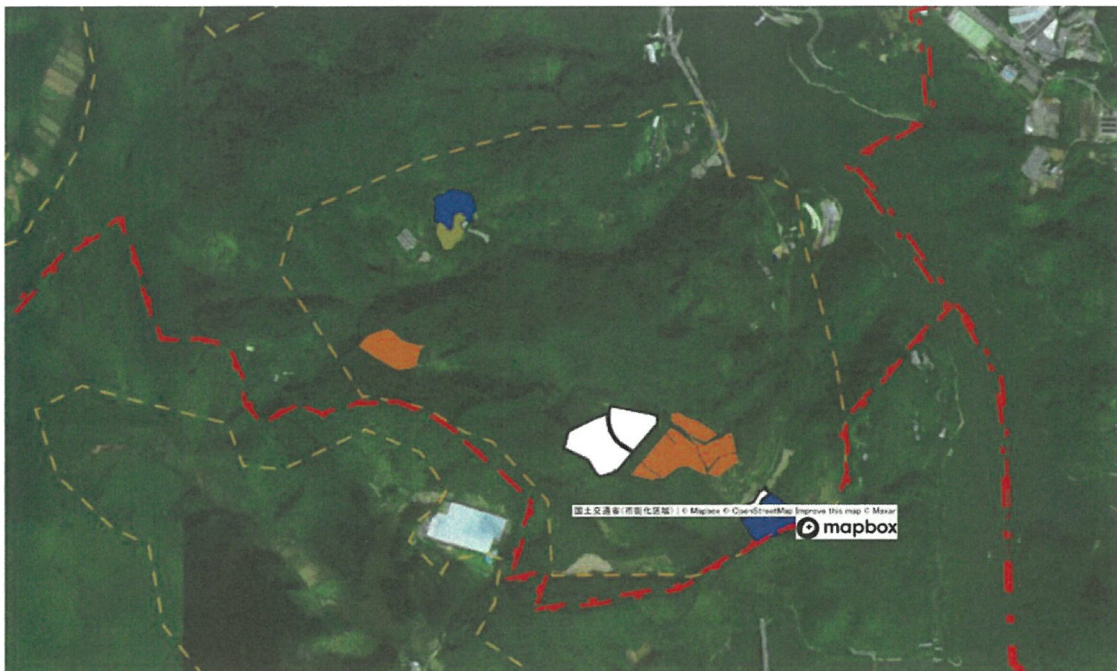
14肱川中央・岩谷_中山間(汗生)



14肱川中央・岩谷_担い手

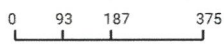


14 肱川中央・岩谷_中山間(久下)

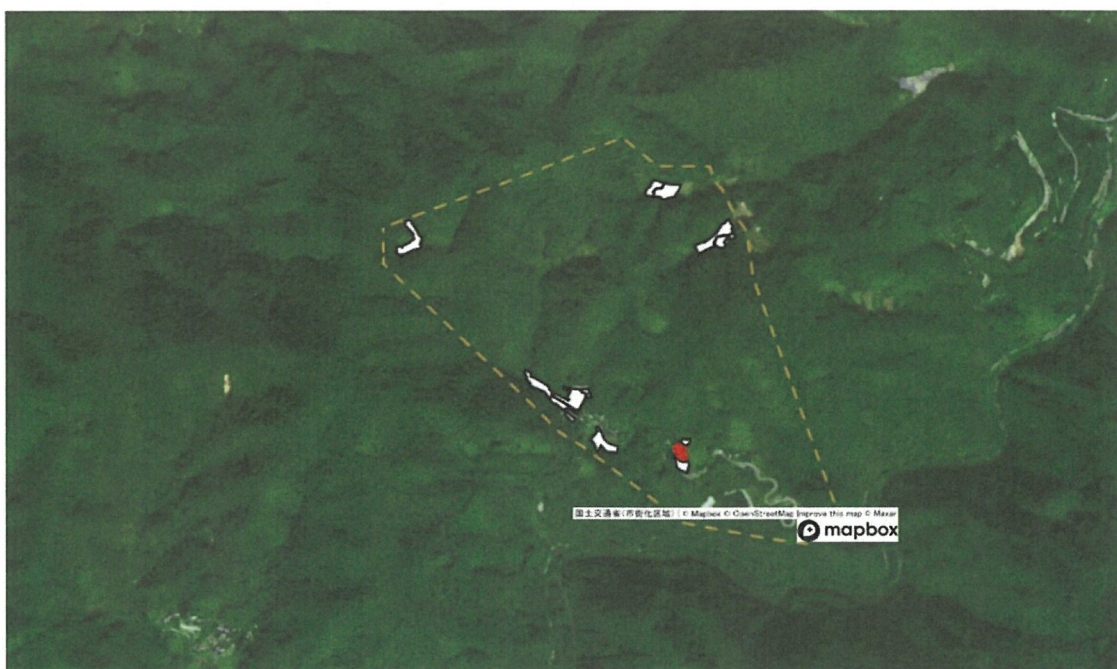


- 1
 - 2
 - 3
 - 4
 - 5
 - 6
 - 7
 - 8
 - 9
 - 10
 - 11
 - 12
 - 13
 - 14
 - 15
 - 16
 - 17
 - 18
 - 19
 - 20
 - 21
- 今後検討等

1 : 7000

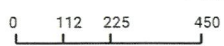


14 肱川中央・岩谷_中山間(見の越)

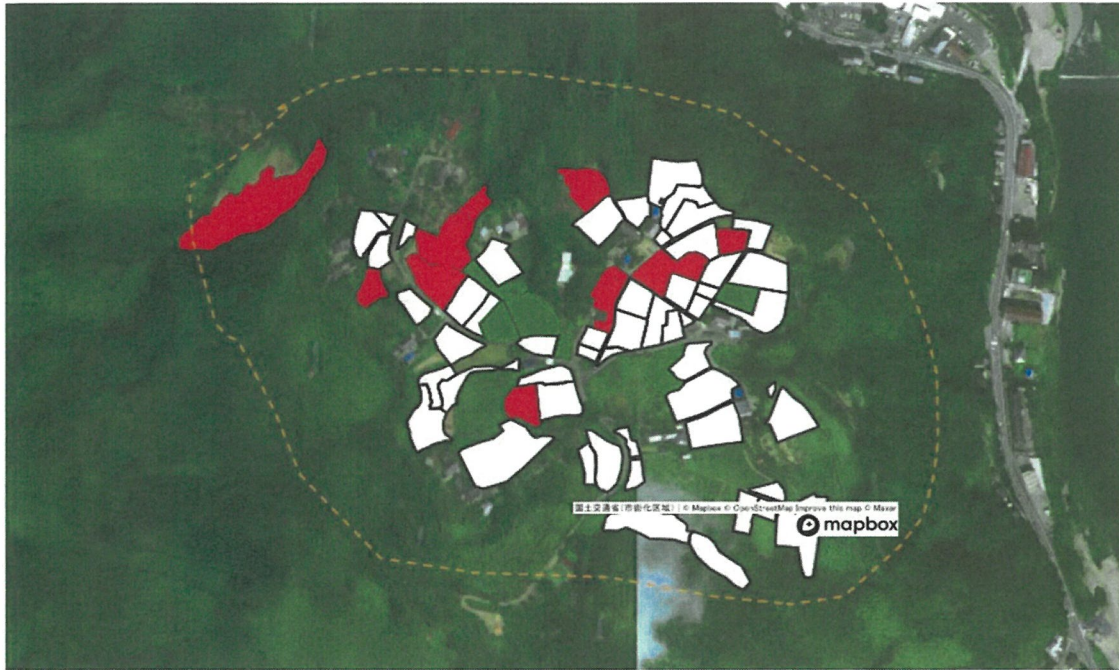


- 1
 - 2
 - 3
 - 4
 - 5
 - 6
 - 7
 - 8
 - 9
 - 10
 - 11
 - 12
 - 13
 - 14
 - 15
 - 16
 - 17
 - 18
 - 19
 - 20
 - 21
- 今後検討等

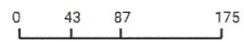
1 : 8500



14 肱川中央・岩谷 中山間(中野)

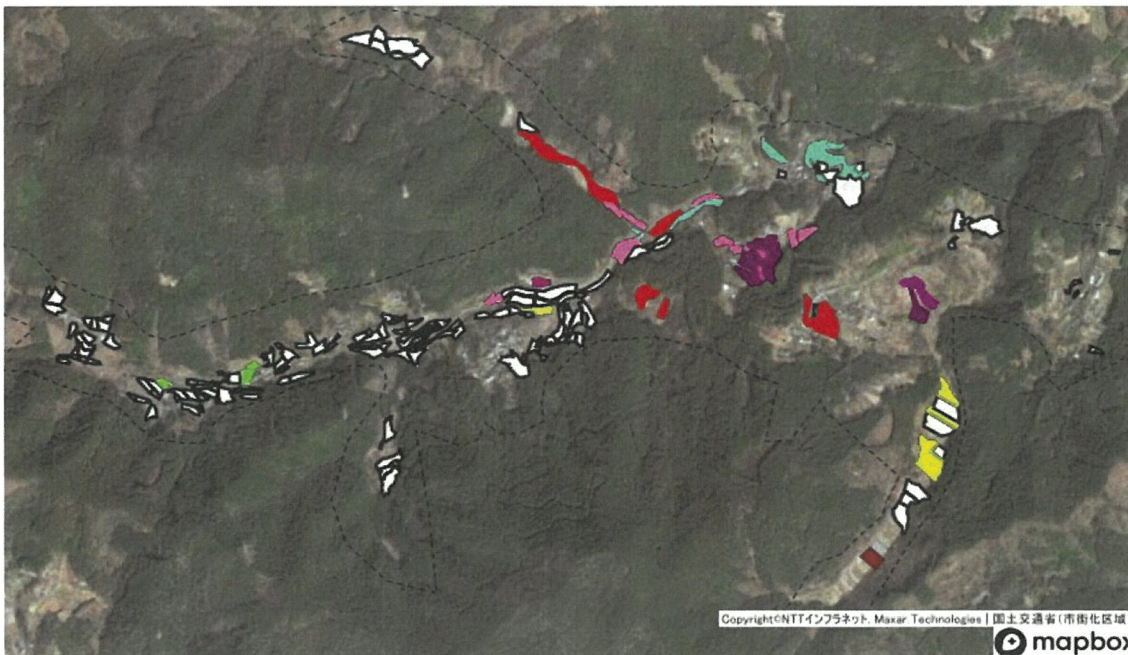


1 : 3000

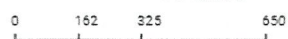


- 1
 - 2
 - 3
 - 4
 - 5
 - 6
 - 7
 - 8
 - 9
 - 10
 - 11
 - 12
 - 13
 - 14
 - 15
 - 16
 - 17
 - 18
 - 19
 - 20
 - 21
- 今後検討等

14 肱川中央・岩谷_中山間(小薮)



1 : 12500



- 1
 - 2
 - 3
 - 4
 - 5
 - 6
 - 7
 - 8
 - 9
 - 10
 - 11
 - 12
 - 13
 - 14
 - 15
 - 16
 - 17
 - 18
 - 19
 - 20
 - 21
 - 22
- 今後検討等