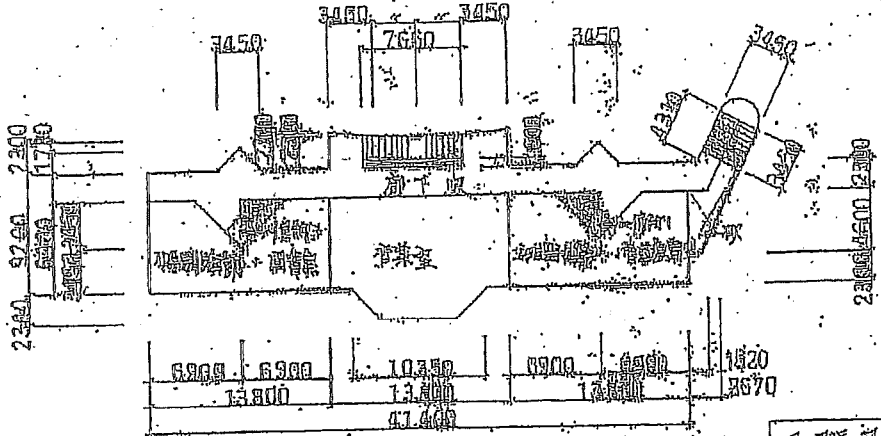


(平成24年度)

平面図

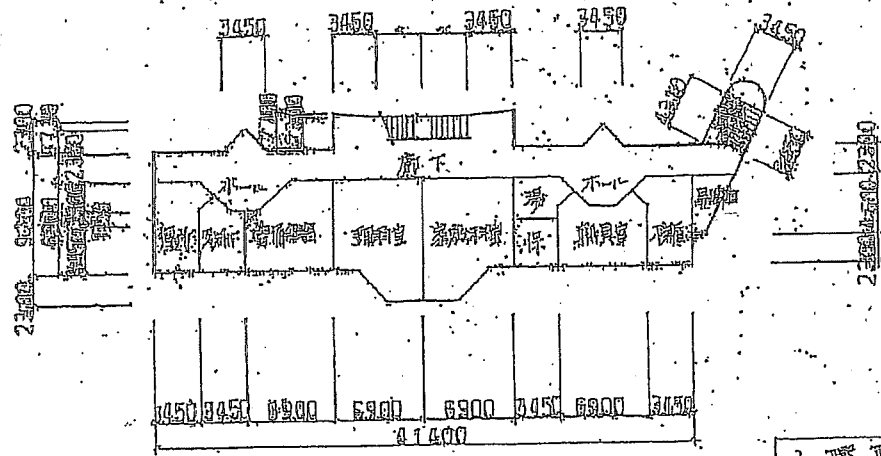
校舎番号	21070308	355
------	----------	-----

⑦



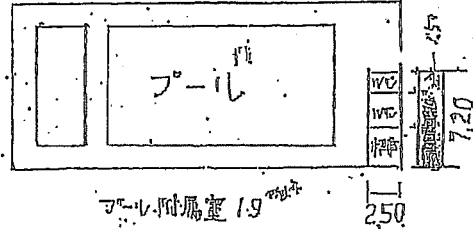
2.階平面図

⑦



1.階平面図

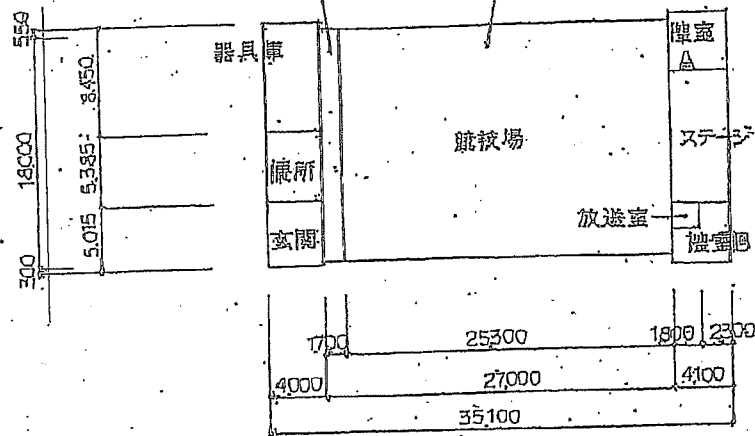
⑤



(平成24年度)

危険改築 106 m<sup>2</sup>

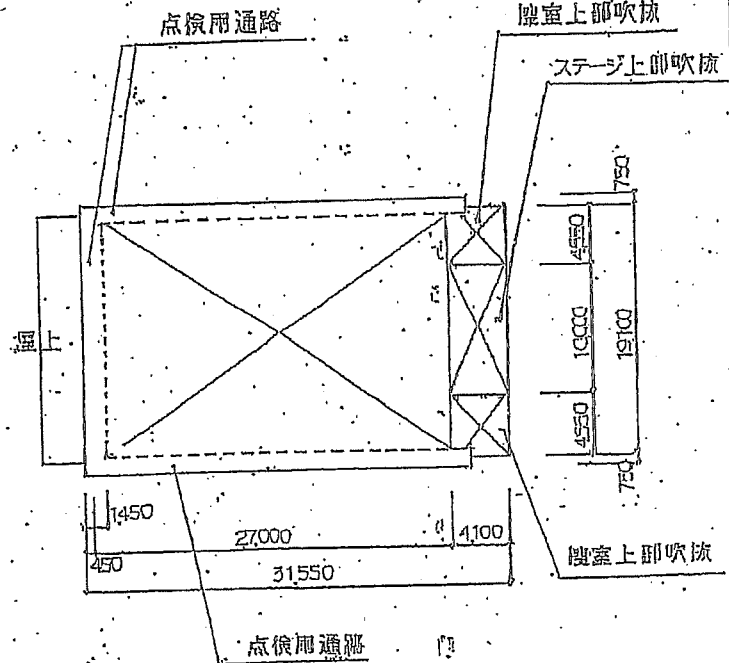
延床面積 533.71 m<sup>2</sup>



⑧ 1階平面図 1:500

床面積計算

$$35.1 \times 18.0 + 0.95 \times 4.1 \times 2 + 0.55 \times 4.0 + 0.3 \times 4.0 = 639.71 \text{ m}^2$$



2階平面図 1:500